

# Your Summer Newsletter

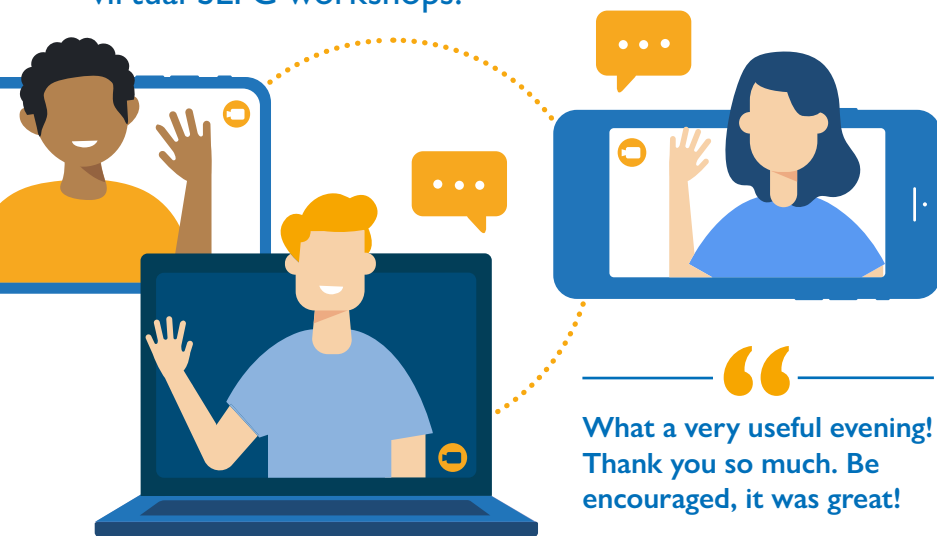


with TORCH TRUST

Welcome to the Summer edition of our SLFC Newsletter. In these challenging times we are still here for you and those with sight loss in your congregation.

## Virtual Workshops

We are really excited to be able to now launch virtual SLFC workshops.



We can deliver an interactive, fun and engaging workshop using the Zoom platform. We hope these virtual workshops will help raise awareness of sight loss, as well as give advice and guidance for helping people with sight loss to feel fully included in their churches. For more information or if your church is interested in taking part in a Zoom workshop please do email using [slfc@torchtrust.org](mailto:slfc@torchtrust.org)

“  
What a very useful evening!  
Thank you so much. Be  
encouraged, it was great!

You all came across as very  
friendly, encouraging, and  
professional, and I'm sure  
we'll be searching your  
website for some excellent  
resources in the future.

If we can help Torch in any  
way, do let me know.

A participant of a virtual  
workshop in Southbourne

## Summer Top Tip

Showing slides is a great way to engage people in your virtual services, but it's not easy for people with sight loss to access them. **Always read out everything that is being displayed on the screen.** Make the PowerPoint files available for download in advance so that people with sight loss can work with them more effectively. Alternatively, you could email them to people with sight loss or send enlarged printouts to them in the post.



## Meeting the team

Becky Davies joined Torch last year as a Torch and SLFC Representative. She is now the SLFC Manager (acting). She writes:

“My husband and I have moved around the country and worked with lots of different churches over the last 10 years. I have worked as a children's worker, schools worker and as an activities coordinator in a care home. Wherever we have been our church family has been a vital part of our life and something that we have valued enormously. I believe passionately that our churches should be a place that is accessible to everyone and somewhere that we can all feel included. Therefore, it has been a huge privilege to be a part of the Sight Loss Friendly Church team for the past year. I have loved visiting some of our SLFC churches and running workshops as well as speaking at various conferences and church meetings. And it has been a real encouragement to hear how SLFC has been making a difference for people with sight loss. As we look at how we can continue to support churches in these unusual times my prayer is that God will bless the work of SLFC so that people with sight loss can be fully included in the life of our churches.”



# New SLFC Catch-up

We are really pleased to be able to offer you the opportunity for you and anyone in your congregation to join the SLFC team at our new monthly SLFC Catch-up sessions on Zoom. These are a great opportunity to meet the team, ask any questions you may have, find out the latest tips and advice we have to offer and hear stories from other SLFCs. All sessions start at 7pm and will last for approximately 30 minutes. The next dates are Wednesday 19th August, Tuesday 29th September and Tuesday 27th October. To book onto any of these please email [slfc@torchtrust.org](mailto:slfc@torchtrust.org)



## Torch for your congregation

Sight Loss Friendly Churches are really important members of the Torch family. One of the many benefits of being an SLFC is your ability to order Accessible Christian Literature in large print, audio and braille directly from Torch on behalf of members of your congregation. This is a great way to ensure that, if you are providing resources for everyone else in your church, you can provide for your members with sight loss too. For example, if you're running a course or Bible study group and you're planning to give print resources to participants, you can give accessible resources to participants who need them.



Sometimes, however, members of your congregation will find resources for themselves. For example, you might know of members of your congregation who independently subscribe to their favourite Christian magazine or Bible reading notes. This is a great help to the church as it relieves the administrative burden of needing to maintain stock of dozens of publications on behalf of the congregation.

People with sight loss deserve the same autonomy as anyone else in the congregation. That's why, in addition to SLFC, Torch sells Accessible Christian Literature directly to individual clients. Furthermore, clients have access to an extensive large print, audio and braille lending library, with a catalogue of several thousand titles spanning Christian fiction, theology, autobiography and much more. The library operates by post, which is completely free of charge courtesy of the Articles for the Blind scheme.

We'd really appreciate it if you would tell anyone with sight loss in your congregation about the many benefits of signing up to be a Torch client. It's completely free of charge and only involves a simple phone call. The only qualifying criteria is that the applicant must have sight loss.

For more information or to sign up, see the enclosed leaflet or call our Client Services team on 01858 438260. Please also contact us if you would like a copy of the leaflet in an accessible format to give to members of your congregation.

## Think, Ask, Act



**Think:** what resources do members of your congregation tell you they like to use?



**Ask:** whether members of your congregation with sight loss would like to access some of these resources for themselves.



**Act:** encourage them to contact Torch for an accessible copy. You might like to order a sample edition for them to help with this.

## Support us

The ministry of Torch is totally dependent on donations and legacies and so we would feel very blessed if you would consider supporting Torch's ministry as part of your giving to mission. This could be a regular, occasional or one-off gift from your church. You can make donations by visiting our SLFC website.

## Contact us

This newsletter as a PDF is accessible; however, if you do need it in braille, large print or audio CD, please ask. Our friendly team are here to help you with all your queries. You can call us on **01858 438260** from Monday to Thursday inclusive, 10am until 4pm, or email [info@torchtrust.org](mailto:info@torchtrust.org)

[www.sightlossfriendlychurch.org.uk](http://www.sightlossfriendlychurch.org.uk)

